

# Berkshire Catalog

Contamination Control Products for Cleanrooms, Sterile, and Controlled Environments



**Berkshire**  
ENGINEERED CLEAN

Your Partner in Contamination Control

*Microelectronics*

*Pharmaceutical Manufacturing*

*Pharmacy Compounding*

*Automotive Surface Preparation*

*Animal Lab*



*Aerospace*

*Aseptic Process*

*Large Format Printing*

## **Berkshire is Your Source for Innovative and High Quality Cleanroom and Controlled Environment Consumables**

For more than 40 years, Berkshire has been a global leader in the engineering and manufacturing of cleanrooms and controlled environments products. With manufacturing sites in the USA, UK and China, and sales operations on four continents, Berkshire has the capabilities to meet your smallest and largest demands... no matter where you're located.

Whether you are in the medical device, pharmaceutical/biotechnology, semiconductor, optics, microelectronics or sterile pharmaceutical compounding industries, Berkshire is committed to offering you products that minimize the risk of contamination in your cleanrooms. At Berkshire, manufacturing and providing the most advanced contamination control products are all we do.

**GLOBAL SERVICE AND SUPPORT**

**QUALITY**

**INNOVATION**



# Product Guide

---

## Critical and Controlled Environment Wipers



Berkshire offers a wide range of dry, pre-wetted, and sterile wipers for ISO Class 3-8, controlled, and sterile environments.

## Swabs



Berkshire offers an extensive range of high quality polyester knit, foam, and nonwoven swab tip materials to choose from.

## Green Products



The Berkshire Green Scope encompasses Berkshire's commitment to creating solutions in operations and product design that will positively impact the environment. Berkshire offers 100% biodegradable cleanroom wipers and 100% recyclable cleanroom bond/paper.

## Cleanroom Bond/Notebooks



Cleanroom paper is an integral component in critical environments. Berkshire Cleanroom Bond and Notebooks provide a flexible way for you to record information throughout the production process without contamination.

## Mops and Accessories



Berkshire offers cleanroom mops (sterile/nonsterile) for floors, ceilings, and walls, as well as isolator cleaning tool systems.

# CHOICE®



A value tiered family of products from Berkshire

## Glove Liners



BCR® Cleanroom Glove Liners offer protection and enhanced comfort during extended wear. They greatly reduce perspiration and contact dermatitis associated with wearing latex, vinyl, nitrile and other gloves.

## Face Masks



People are a significant source of contamination in any critical manufacturing process. Berkshire masks are designed to protect your cleanroom or controlled environment from human contamination.

## Custom Products

Whether you need a special size, packaging configuration, saturation level, or even a new substrate, Berkshire can create custom products for your special process requirements. Contact your Regional Technical Representative in order to learn more about creating a custom product.

# Index

---

CONTAMINATION CONTROL AND WIPER CLEANLINESS .....	5
WIPER TEST METHODS .....	6
CRITICAL PROCESS WIPERS .....	7 - 14
CONTROLLED PROCESS NONWOVEN WIPERS .....	15 - 21
CONTROLLED PROCESS, LIGHTWEIGHT, LOW LINTING, AND LOW CALIPER WIPERS .....	22 - 23
INDUSTRIAL PROCESS WIPERS .....	24 - 25
SATPAX® PRE-WETTED WIPERS .....	26 - 30
CHOICE® PRODUCTS .....	31 - 34
DOCUMENTATION SYSTEMS .....	35 - 36
GLOVE LINERS .....	37 - 38
FACE MASKS .....	39
MOPS & ACCESSORIES .....	40
FLAT MOP SYSTEM .....	41
BCR FLAT MOP COVERS/WIPERS .....	42 - 43
SWABS .....	44 - 47

---

## Customer Service

Our highly trained representatives are ready to assist or answer any questions that you may have, please contact:



### The Americas

**Phone:** 1.800.242.7000  
1.413.528.2602  
**Fax:** 1.336.446.0156  
**Email:** [csr@berkshire.com](mailto:csr@berkshire.com)

### Southeast Asia

**Phone:** 65.6252.4313  
**Fax:** 65.6252.4312  
**Email:** [enquiries@berkshire.com.sg](mailto:enquiries@berkshire.com.sg)



**Request a  
Free Sample**

### North Asia

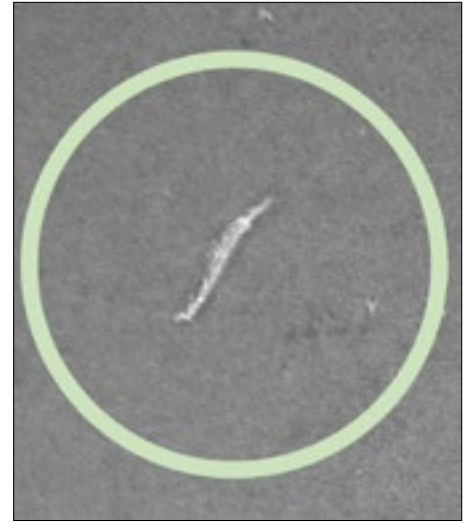
**Phone:** 81.3.5827.2380  
**Fax:** 81.3.5827.2382  
**Email:** [master@berkshire.co.jp](mailto:master@berkshire.co.jp)  
**Website:** <http://www.berkshire.com.jp/>

### Europe

**Phone:** 44.(0)870.757.2877  
**Fax:** 44.(0)870.757.2878  
**Email:** [enquiries@berkshire.uk.com](mailto:enquiries@berkshire.uk.com)

## Contamination Control and Wiper Cleanliness

---



Wipers and other supplies can potentially be a source of contamination in the cleanroom and manufacturing environment. It is important to validate and select the appropriate supply materials entering the cleanroom to maintain the required ISO cleanroom standards.

Berkshire's critical and controlled environment wipers are tested according to industry standards set by the IEST (Institute of Environmental Sciences and Technology) under IEST-RP-CC004.3: Evaluating Wiping Materials Used In Cleanrooms and Other Controlled Environments.

A wiper's cleanliness is interpreted as the number of fibers and particles released per area of wiper. Aside from particle and fiber release, wipers can also release non-volatile residues and ions into the environment. In the semiconductor and electronics manufacturing processes, metallic ions can be a source of contamination.

---

## Berkshire Online Store is NOW OPEN!

Visit Our

**NEW**

Products Section

**Featuring:**

- New Selection Guides
- New Search Functions
- New Application Assistance

**Fast Online Navigation For:**

- Berkshire's Digital Catalog
- Requesting Free Samples
- Requesting Quotes

Credit card orders are welcome and we accept  
(U.S. Sales Only)



**Fast and Secure**





# Wiper Test Methods



## Testing for Particles and Fibers

The particle and fiber test method calculates the amount of fiber and particle shedding released by a wiper. Wiper is placed in water and agitated for a set length of time. The amount of particle and fiber released into the water indicates the cleanliness of the wiper.

**Fibers:** A wiper is agitated in water using a biaxial shaker for five minutes. The fibers released into the water are filtered onto a membrane and counted microscopically. The results are expressed as fibers  $\geq 100\mu\text{m}$  per square centimeter of wiper. (IEST-RP. CC004.3, Section 6.2.2.2)

**Particle Generation - Biaxial Shake Test:** A wiper is "washed" in water using a biaxial shaker for five minutes. The particles released into the water are counted by a liquid-borne particle counter. By dividing the total number of particles released by the area of the wiper, the results are expressed as particles  $\geq 0.5\mu\text{m}$  per square centimeter of wiper. (IEST-RP. CC004.3, Section 6.1.3)

## Testing for Sorbency

Sorbency tests the ability of a wiper to absorb liquid measured by the time to absorb and the volume of liquid absorbed per a predetermined area. The higher the sorbency, the more liquid a wiper can hold. A wiper that has a fast time to absorb rate means that the wiper can readily pick up spills and or cleaning solutions.

**Sorbency :** A sample piece of material is saturated with as much fluid as it can hold. After one minute, the material is weighed, and results are expressed in millimeters of fluid per square meter. (IEST-RP. CC004.3, Section 8.1 - modified)

**Efficiency:** This calculation indicates how well a material absorbs, relative to others. Results, expressed in millimeters of liquid per gram of material, assist in comparing one raw material with another. (IEST-RP. CC004.3. Section 8.1 - modified)

**Rate:** This test is a measurement of the time it takes a wiper to absorb a liquid. Results are expressed in seconds. (IEST-RP. CC004.3. Section 8.1 - modified) Purity

## Testing for Non-Volatile Residue

Berkshire generates non-volatile data using both deionized water and 2-Propanol. Results are expressed in grams of extractables per square meter of wiper, which is a useful guide to relative purity of wipers. ( IEST-RP. CC004.3, Section 7.1.2)

**Metallic Ions:** Ions are extracted in deionized water and quantitatively analyzed by Ion Chromatography. Results are stated in parts per million (ppm). (IEST-RP. CC004.3, Section 7.2.2.)

For more information on wiper test methods, click here to read this technical paper on "[Understanding Cleanroom Wiper Test Data and the Role of Product Data/Information Sheets](#)"

# Critical Process Wipers



**Critical Process Wipers** are designed to be used in ISO Class 3-5 or Cleanroom Class 1-100 environments.

## Applications

Applications for critical process wipers include oxidation, metallization, CVD or photolithography processes, chamber cleaning and CMP processing, applying and removing disinfecting solutions and stencil and print roll cleaning. These wipers are steam autoclavable for aseptic environments and are suitable for the cleaning of medical device products.

## Features

- All critical process wipers are composed of 100% polyester knit material
- All critical process wipers are laundered in an ISO 4/Class 10 cleanroom with lot traceability on every pack
- Dry wipers are vacuum-packed in an ISO 4/Class 10 cleanroom
- Sealed-edges – wide sealed edge, fine ultrasonic, or fine laser sealed edges are offered.
- Tear-resistant for tough cleaning
- Compatible with Gamma Irradiation
- Work well with IPA, acetone and other solvents

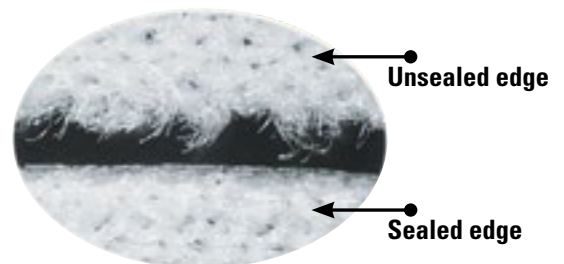
## What are Knitted Wipers?

Knitted wipers are constructed by interlocking a series of loops of one or more continuous filament yarns. Due to the nature of continuous filament yarns, these substrates will always produce a cleaner wiper than nonwovens.

## Wiper Edge and Contamination Control Qualities

### Sealed Edge Versus Knife Cut Edge

Proper sealing of the wiper edge reduces the wiper's fiber count thus providing a cleaner wiper (see photo). Berkshire offers sealed edge and knife cut edge polyester wipers.



# Critical Process Wipers

---

All Berkshire critical process wipers come in high quality, solvent resistant packaging material that has been tested for cleanroom use. All critical process wipers are double bagged for easy transfer and wipe down.

**For Knitted Wipers, Berkshire offers wipers packaged in value/bulk and stacked configuration.**

## **Value /Bulk Packaging:**

Value/bulk packaged product is placed into a bag with a cursory inspection. The sheet count is arrived at by weight. There is 0% difference in performance between a value packed and stacked product. There is, however, a significant cost savings in a value packaged wiper.

## **Stacked product:**

Each wiper is inspected and stacked one on top of the other. The end result is a square pack that, when opened, allows the removal of each wiper to be removed individually from the stack.

## **Non-standard Options**

Whether a special size, packaging configuration, saturation level, or even a new substrate is needed, Berkshire can create custom products for special process requirements. Contact your Regional Technical Representative to learn more about creating a custom product.

## **Pre-wetted Options**

Berkshire offers pre-wetted options of the knitted wipers. See the pre-wetted wipers section.

## **Validated Sterile Options**

For aseptic processing areas, Berkshire wiper material can be provided in a gamma irradiated validated sterile to a  $10^{-6}$  sterility assurance level.

Dry and pre-wetted versions available.



# Critical Process Wipers

## CRITICAL ENVIRONMENT WIPER SELECTION GUIDE POLYESTER KNIT

Product		Edge Type	Two-Ply	High Absorbency	Super Abrasion Resistant	Sterile Option	Properties / Example Applications
ISO Class 3-5 Class 1-10 EU Grade A, B	CapSure™- LP	Sealed Edge			•		For the most critical applications: CapSure™ treatment results in more contaminant particle capture & reduced likelihood of cross contamination. • Aseptic Processing • Microelectronics production • Paint Preparation
	CapSure™- VP			•		Gamma Wipe CapSure™- VP	For the most critical applications: CapSure™ treatment results in more contaminant particle capture & reduced likelihood of cross contamination. • Aseptic Processing • Microelectronics production • Paint preparation
	Ultra-Seal® 3000	Sealed Border	•		•	Gamma Wipe® 300	Extremely robust & low fiber and particle release • Polishing metal and or paint surface
	MicroSeal Super-Sorb®	Sealed Edge	•	•	•		Most absorbent and durable knitted wiper available on the market. Quilted surface ideal for absorbing solvents and spill pick up.
	MicroSeal®-VP			•			The best combination of wiper properties and value • Equipment wipe down • Aseptic Processing & device assembling
	MicroSeal® 1200			•			Versatile general purpose wiper • Wide selection of pre-wetted options
	ValuSeal®-HA			•			Highly absorbent one-ply wiper
	ValuSeal®-LP				•		Critically low particles & fiber release
	Choice® 700						Most economical sealed edge wiper
	Choice® 900						Economical sealed edge wiper
	Choice® Edge	Sealed Border					Four side sealed border economical wiper
Cut Edge Cleanroom Laundered ISO Class 4-5 Class 10-100 Grade A-B	Choice® 800	Cut Edge		•			Economical cut edge wiper
	SuperPolx® 1200			•		Gamma Wipe® 120	Soft pliable material with durable knit structure - Can be used on sensitive surfaces
	SuperPolx® 1500			•			Lighter weight and more economical than Super Polx® 1200
ISO Class 5-8 Class 100-1,000 EU Grade A-C	Polx® 1200	Cut Edge		•			Unlaundered, cut edge Economical knitted wiper suitable for general cleaning in less critical environments

### STERILE



#### Sterile Version

- Gamma irradiated and sterile validated to a 10<sup>-6</sup> Sterility Assurance Level per ANSI/AAMI/ISO guidelines
- Header bag style
- Lot number on each pack
- Certificate of Sterility available on the Berkshire website by lot number 24/7.  
Details: Expiration Date, Radiation Dosage, Lot Information, Meets cGMP requirements for traceability
- Designed for cleaning sterile surfaces and equipment during aseptic processing
- General wiping in component prep, compounding and wash areas
- General wipedowns in sterile gowning rooms

# Critical Process Wipers

Sealed Edge, Cleanroom Laundered Knitted Wipers

ISO Class 3-5  
Cleanroom Class 1-100  
EU Grade A-B

## CapSure™-LP & CapSure™-VP

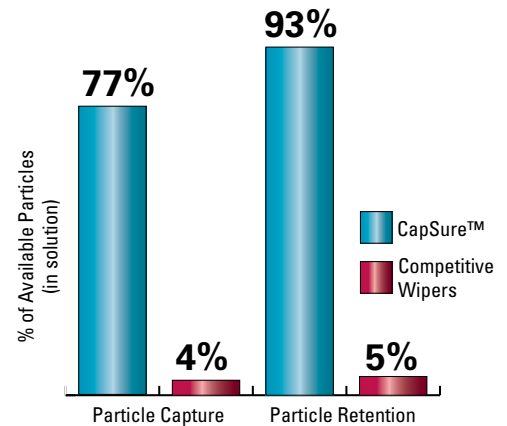
A breakthrough wiper technology from Berkshire, CapSure™ features an innovative process that enables wipers to capture and retain more contaminant to capture and retain more contaminant particles, to provide a more effective wipe, and reduce the risk of recontamination.

CapSure™ is available on ValuSeal®-LP as CapSure™-LP and MicroSeal®-VP as CapSure™-VP wipers. Lighter basis weight than CapSure™-LP, CapSure™-VP is a more economical wiper offering the same particle capture and retention properties.



- 100% continuous filament polyester knit with sealed edges
- Captures 42x more particles than competitive wipers
- Retains 93% of particles initially captured
- Minimal particles, fibers, ions and extractables
- Airborne particle release 80% lower than competitive wipers

### CapSure™ Performance Comparison



Product Name	Berkshire Part No.	Size	Sheets/Pack	Packs/Case
CapSure™-LP	CPSLP.0909.8	9x9" (23x23cm)	150	8
CapSure™-LP	CPSLP.0909B.8	9x9" Bulk (23x23cm)	150	8
CapSure™-LP	CPSLP.1212.14	12x12" (30x30cm)	75	14
CapSure™-LP	CPSLP.1212B.14	12x12" Bulk (30x30cm)	75	14
CapSure™-VP	CPSVP.0909.8	9x9" (23x23cm)	150	8
CapSure™-VP	CPSVP.0909B.8	9x9" Bulk (23x23cm)	150	8
CapSure™-VP	CPSVP.1212.14	12x12" (30x30cm)	75	14
CapSure™-VP	CPSVP.1212B.14	12x12" Bulk (30x30cm)	75	14
<b>STERILE</b> Gamma Wipe® CapSure™-VP	GWCPSPV.ST.25	12x12" (30x30cm)	20 Shts/Pk, 5 Pks/Pckt, 25 Pks/Cs	

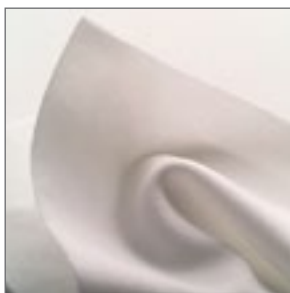
# Critical Process Wipers

## Sealed Edge, Cleanroom Laundered Knitted Wipers

ISO Class 3-5  
Cleanroom Class 1-100  
EU Grade A-B

### ValuSeal® - LP

ValuSeal-LP wipers are 100% knitted polyester, sealed edge wipers, laundered and packaged in Berkshire's ISO 4 (class 10) cleanroom. They combine quality, performance and economy, and are among Berkshire's lowest particle and extractable product offerings.



- 100% continuous filament polyester knit
- Ultrasonically sealed edge for reduced fiber contamination
- Critically low particles, fibers, ions and extractables
- Combination of weight and caliper provide an excellent hand for cleaning rough surfaces

Product Name	Berkshire Part No.	Size	Sheets/Pack	Packs/Case	
ValuSeal-LP®	VSLP.0909.8	9x9" (23x23cm)	150	8	Stacked
ValuSeal-LP®	VSLP.0909B.8	9x9" (23x23cm)	150	8	Bulk
ValuSeal-LP®	VSLP.1212.14	12x12" (30x30cm)	75	14	Stacked
ValuSeal-LP®	VSLP.1212B.14	12x12" (30x30cm)	75	14	Bulk

### MicroSeal®-VP

MicroSeal®-VP wipers are 100% continuous filament knit polyester with ultrasonic sealed edges. The wiper's lightweight, tight knit construction minimizes abrasion of critical components as well as picking and snagging while cleaning rough surfaces. Delivering low ions and extractable residues, this highly absorbent wiper is available in economical value packaging.



- 100% polyester knit wipers with ultrasonically sealed edges
- Lightweight, high absorbency material design reduces actual cost in use compared to heavier weight products
- Critically low particles, fibers, ions and extractables
- Chemically compatible with IPA, acetone and other solvents
- Low endotoxin levels

Product Name	Berkshire Part No.	Size	Sheets/Pack	Packs/Case	
MicroSeal®-VP	MSVP.0909.8	9x9" (23x23cm)	150	8	
MicroSeal®-VP	MSVP.0909B.8	9x9" Bulk (23x23cm)	150	8	
MicroSeal®-VP	MSVP.1212.14	12x12" (30x30cm)	75	14	
MicroSeal®-VP	MSVP.1212B.14	12x12" Bulk (30x30cm)	75	14	

# Critical Process Wipers

## Sealed Edge, Cleanroom Laundered Knitted Wipers

ISO Class 3-5  
Cleanroom Class 1-100  
EU Grade A-B

### MicroSeal® 1200

MicroSeal® 1200 is suited as an all-purpose wiper. It is ideal for use in the most critical environments for spill control, equipment cleaning and general clean up.



- 100% polyester knit wipers with ultrasonically sealed edges
- Weight and caliper provide an excellent hand for cleaning rough surfaces
- Critically low particles, fibers, ions and extractables
- Chemically compatible with IPA, acetone and other solvents
- Low endotoxin level

Product Name	Berkshire Part No.	Size	Sheets/Pack	Packs/Case
MicroSeal® 1200	MS1200.0404B.10	4x4" Bulk (10x10cm)	600	10
MicroSeal® 1200	MS1200.0909.8	9x9" (23x23cm)	100	8
MicroSeal® 1200	MS1200.0909B.8	9x9" Bulk (23x23cm)	100	8
MicroSeal® 1200	MS1200.1212.6	12x12" (30x30cm)	100	6
MicroSeal® 1200	MS1200.1212B.6	12x12" Bulk (30x30cm)	100	6

### ValuSeal-HA®

ValuSeal-HA® is a highly absorbent, ultrasonically sealed edge, 100% polyester wiper. It is designed to address specific absorbency concerns, purity levels, and strength and durability for the semiconductor and biomedical markets.



- 100% continuous filament polyester knit
- Ultrasonically sealed edge for reduced fiber contamination
- Strong, tear and abrasion resistant
- High absorbency
- Lightweight, high absorbency material design reduces actual cost in use compared to heavier weight products

Product Name	Berkshire Part No.	Size	Sheets/Pack	Packs/Case
ValueSeal-HA®	VSHA.0909.8	9x9" (23x23cm)	150	8
ValueSeal-HA®	VSHA.0909B.8	9x9" Bulk (23x23cm)	150	8
ValueSeal-HA®	VSHA.1212.14	12x12" (30x30cm)	75	14
ValueSeal-HA®	VSHA.1212B.14	12x12" Bulk (30x30cm)	75	14

# Critical Process Wipers

## Two Ply Sealed Edge Wiper

ISO Class 3-5  
Cleanroom Class 1-100  
EU Grade A-B

### MicroSeal SuperSorb®

MicroSeal SuperSorb® possesses super absorbency capacity along with a high level of cleanliness and durability. It is an excellent wiper for applications where high concentrations of liquid are in use, as well as cleaning and wiping rough surfaces. This is Berkshire's most absorbent wiper.



- 100% continuous filament polyester
- Ultrasonically sealed edges
- Thick 2-ply fabric
- Most absorbent polyester wiper available
- Clean, soft and pliable edges
- Lightweight version available



Product Name	Berkshire Part No.	Size	Sheets/Pack	Packs/Case	
MicroSeal SuperSorb®	MSSS.0909.8	9x9" (23x23cm)	100	8	
MicroSeal SuperSorb®	MSSS.1212.12	12x12" (30x30cm)	50	12	
MicroSeal SuperSorb® Lite	SSLT.0909B.14	9x9" (23x23cm)	100	14	Bulk
MicroSeal SuperSorb® Lite	SSLT.0909.14	9x9" (23x23cm)	100	14	Stacked
MicroSeal SuperSorb® Lite	SSLT.1212B.16	12x12" (30x30cm)	50	16	Bulk
MicroSeal SuperSorb® Lite	SSLT.1212.16	12x12" (30x30cm)	50	16	Stacked

### Ultra-Seal® 3000

Ultra-Seal® 3000's unique construction makes this wiper ideal for the most critical cleanroom applications. Industry uses include semiconductor and circuit board manufacturing, delicate computer assembly, and aerospace and pharmaceutical manufacturing areas where an ultra-clean wiper is necessary to quickly absorb large spills without contamination.



- 100% continuous filament sealed-edge polyester
- Patented sealed edge process combined with tubular design
- Offers excellent abrasion resistance for the toughest cleaning applications
- Heat-sealed on two edges
- More absorbent than standard polyester cleanroom wipers



Product Name	Berkshire Part No.	Size	Sheets/Pack	Packs/Case
Ultra-Seal® 3000	US3000.0909.8	9x9" (23x23cm)	100	8
Ultra-Seal® 3000	US3000.1212.6	12x12" (30x30cm)	100	6
<b>STERILE</b> Gamma Wipe® 300	GW300.ST.25	12x12" (30x30cm)	10 Shts/Pk, 5 Pks/Pckt, 25 Pks/Cs	



# Critical Process Wipers

## Cleanroom Laundered Knitted Knife Cut Edge Wipers

ISO Class 4-5  
Cleanroom Class 10-100  
EU Grade A-B

### Super Polx® 1200

Super Polx® 1200 is the ideal wiper for many industries. It is widely used in laboratories biotech research facilities, aerospace, defense electronics, computer assembly, and semiconductor, circuit board, pharmaceutical, and biomedical device manufacturing.

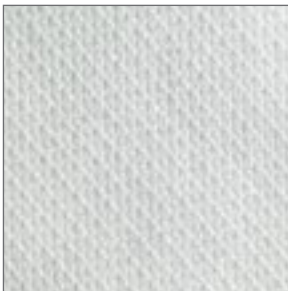


- 100% continuous filament polyester
- Engineered for low ions and chemical resistant
- Absorbs three times its own weight
- Durable for abrasive wiping

Product Name	Berkshire Part No.	Size	Sheets/Pack	Packs/Case
Super Polx® 1200	S1200.0404.10	4x4" (10x10cm)	600	10
Super Polx® 1200	S1200.0909.8	9x9" (23x23cm)	150	8
Super Polx® 1200	S1200.0909B.8	9x9" Bulk (23x23cm)	150	8
Super Polx® 1200	S1200.1212.14	12x12" (30x30cm)	75	14
Super Polx® 1200	S1200.1212B.14	12x12" Bulk (30x30cm)	75	14
<b>STERILE</b> Gamma Wipe® 120	GW120.ST.15	12x12" (30x30cm)	20 Shts/Pk, 5 Pks/Pckt, 15 Pks/Cs	

### Super Polx® 1500

Super Polx® 1500 is perfect for use in the aerospace industry, computer/circuit board production, and semiconductor manufacturing where particle and ion content are a concern. Its rugged knit construction makes Super Polx® 1500 great for wiping up tough spills on either soft or rough surfaces without abrading or tearing.



- 100% continuous filament polyester
- Engineered finishing process increases absorbency
- Lightweight and economical
- Absorbs twice its own weight

Product Name	Berkshire Part No.	Size	Sheets/Pack	Packs/Case
Super Polx® 1500	S1500.0909.8	9x9" (23x23cm)	150	8
Super Polx® 1500	S1500.0909B.6	9x9" Bulk (23x23cm)	150	6

## Controlled Process Nonwoven Wipers

---



Berkshire offers a wide selection of nonwoven wipers with various blends of fiber depending on the need for fiber and particle control, absorbency, and environmental factors.

These wipers are designed to minimize and remove contamination throughout the manufacturing process. They are recommended for use in preparation and controlled zones supporting the critical process areas and are often used as general all-purpose wipers. Our nonwoven wipers have a lot number on each pack which meets traceability requirements.

### What are Nonwoven Wipers?

Nonwovens are a sheet, web, or bat of natural and/or synthetic fibers or filaments, excluding paper, that have not been converted into yarns. Bonded to each other in several ways including hydro-entanglement, Berkshire's nonwoven wipers are typically used in some ISO5 and all ISO6 and above environments.

### Pre-wetted Options

Berkshire offers pre-wetted options for nonwoven wipers. See the Pre-wetted Wipers section.

### Validated Sterile Options

For aseptic processing areas, Berkshire wiper material can be provided in a gamma-irradiated, validated sterile to a  $10^{-6}$  sterility assurance level. Dry and pre-wetted versions available.

# Controlled Process Nonwoven Wipers

## CONTROLLED ENVIRONMENT WIPER SELECTION GUIDE

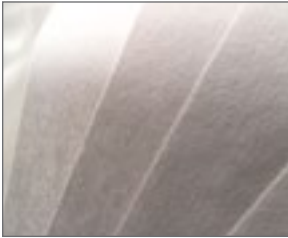
		ISO Class 5-8	Class 100-100,000	EU Grade A-D
	Product	Composition	Note	Example Applications
Nonwoven	<b>BlueSorb® 750</b>	55% cellulose/45% polyester	Blue Color	Visual inspection background, general purpose
	<b>Durx® 670</b>	55% cellulose/45% polyester	Sterile option	General purpose
	<b>Durx® 770</b>	55% cellulose/45% polyester	Binder	Treated wiper for applications requiring lower fiber and particle counts
	<b>EcoClean® 35</b>	Nonwoven cotton	1/4 fold, Apertured, 100% Biodegradable	Healthcare, optical, diffusion furnaces/ovens
	<b>EcoClean® 60</b>	Nonwoven cotton	Soft, 100% Biodegradable	Sensitive surfaces, high temperature production equipment
	<b>MicroFirst®</b>	45% cellulose/55% polyester	Apertured	Polishing and cleaning metals, plastics, epoxy surfaces
	<b>MicroFirst LP®</b>	58% polyester/42% lyocell		Wiping delicate surfaces
	<b>ProjX® 700</b>	55% cellulose/45% polyester	Creped	Lightweight construction wiper
	<b>ProWipe® 750</b>	60% polypropylene/40% cellulose		Solvent resistant industrial wiper with increased absorbency
	<b>ProWipe® 880</b>	100% polypropylene	Certified for Food Contact EC Regulation 1935 (2004)	Multi-layer soft solvent resistant wiper
	<b>ValuClean® Plus</b>	50% rayon/50% polyester		Economical high performance wiper
		ISO Class 6-8	Class 1,000-100,000	EU Grade B-D
	Product	Composition	Note	Example Applications
	<b>Lensx® 90</b>	70% rayon/30% cellulose	Meets AA-50177, Type 1, Class 1 for Lightweight Lens Paper	Cleaning of delicate optical lenses
	<b>Labx® 170</b>	63% abaca/37% softwood	Meets AA-50177, Type 1, Class 4	Wafer separator, wet bench liner, work-mat, blotter
	<b>Labx® 123</b>	100% manila hemp nonwoven	Meets AA-50177, Type 1, Class 5	Light-weight, wafer separator, tray liner and wet bench material
	<b>Twilx® 1622</b>	Woven cotton		High temperature application, burnishing disk surfaces

# Controlled Process Nonwoven Wipers

ISO Class 5-8  
Cleanroom Class 100-100,000  
EU Grade A-D

## Durx® 670

Superior strength and absorbency make Durx® 670 an ideal choice for a general purpose wiper. Manufactured without the use of binders or surfactants, ion levels and organic extractables remain low. Durx® 670 can be used for cleaning and maintenance in laboratories, aerospace, defense electronics, food processing, computer assembly and semiconductor, circuit board, pharmaceutical, and biomedical device manufacturing.



- No binders or other chemical additives
- Smooth, highly absorbent and durable
- Low extractable levels and particle counts
- Chemically compatible with common cleaning and disinfecting solutions
- Autoclavable
- Economical

Product Name	Berkshire Part No.	Size	Sheets/Pack	Packs/Case
Durx® 670	DR670.0404.10	4x4" (10x10cm)	1,200	10
Durx® 670	DR670.0404.40	4x4" (10x10cm)	300	40
Durx® 670	DR670.0707.45	7x7" (18x18cm)	300	45
Durx® 670	DR670.0909.20	9x9" (23x23cm)	300	20
Durx® 670	DR670.1212.20	12x12" (30x30cm)	150	20
Durx® 670	DR670.1818.10	18x18" (46x46cm)	150	10
<b>STERILE</b> Gamma Wipe® 67	GW67.ST.25	12x12" (30x30cm)	20 Shts/Pk, 5 Pks/Pckt, 25 Pks/Cs	

## Durx® 770

Durx® 770 is ideal for critical small parts cleaning. It can be used for cleaning and maintenance in laboratories, aerospace, electronics, food processing, photo processing, semiconductor, circuit board, pharmaceutical, and biomedical device manufacturing.



- Binder treatment reduces particle and fiber generation
- Smooth, absorbent and durable
- Chemically compatible with common cleaning and disinfecting solutions
- Autoclavable
- Economical

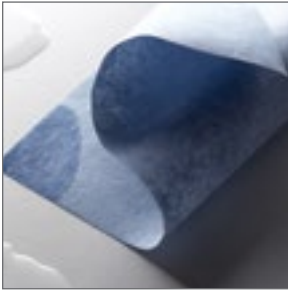
Product Name	Berkshire Part No.	Size	Sheets/Pack	Packs/Case
Durx® 770	DR770.0404.40	4x4" (10x10cm)	300	40
Durx® 770	DR770.0909.20	9x9" (23x23cm)	300	20
Durx® 770	DR770.1212.20	12x12" (30x30cm)	150	20
Durx® 770	DR770.1818.10	18x18" (46x46cm)	150	10

# Controlled Process Nonwoven Wipers

ISO Class 5-8  
Cleanroom Class 100-100,000  
EU Grade A-D

## BlueSorb® 750

BlueSorb® 750 is an ideal choice for a workmat or visual inspection background. As a general purpose wiper it is used for cleaning and maintenance in laboratories, aerospace, defense electronics, food processing, computer assembly and semiconductor, circuit board, pharmaceutical and biomedical device manufacturing.



- Hydro-entangled 55% cellulose/45% polyester enhanced with a blue color
- Blue color allows for separation by critical environment process areas
- Soft, highly sorbent and durable
- Critical combination of the strength of synthetic polyester with the absorbency of cellulose
- Works well with IPA and other solvents

Product Name	Berkshire Part No.	Size	Sheets/Pack	Packs/Case
BlueSorb® 750	BS750.0404.40	4x4" (10x10cm)	300	40
BlueSorb® 750	BS750.0909.20	9x9" (23x23cm)	300	20
BlueSorb® 750	BS750.1212.20	12x12" (30x30cm)	150	20

## ValuClean® Plus

ValuClean® Plus is a hydro-entangled rayon/polyester nonwoven recommended for ISO Class 5 and above environments and offers exceptional absorbency, durability and cleanliness at an economical price point. Due to its 50% rayon content, ValuClean® Plus has best-in-class absorbency, reducing actual wiper usage in spill removal applications. Its soft hand and low fiber shedding performance make it a good choice in critical cleaning applications where economy is important.



- Hydro-entangled 50% rayon/50% polyester
- Smooth with excellent strength and durability
- No binders or other chemical additives
- High absorbency compared to typical cellulose/polyester nonwoven wipers
- Low extractable levels and particle counts
- Economical

Product Name	Berkshire Part No.	Size	Sheets/Pack	Packs/Case
ValuClean® Plus	VCLP.0909.20	9x9" (23x23cm)	300	20
ValuClean® Plus	VCLP.0707.45	12x12" (30x30cm)	300	45
ValuClean® Plus	VCLP.1212.20	12x12" (30x30cm)	150	20



# Controlled Process Nonwoven Wipers

ISO Class 5-8  
Cleanroom Class 100-100,000  
EU Grade A-D

## EcoClean® 35 & EcoClean® 60

Berkshire's EcoClean® line of products is a new class of nonwoven materials that is 100% biodegradable and sustainable. The EcoClean® wiper is composed of U.S. sourced cotton fibers and is manufactured by a proprietary process for low fiber release and high strength. Unlike the traditional cotton twill, it has low ionic traces and low fibers. EcoClean® is offered in quarter-folded and flat sheet formats.



- EcoClean® 35 has an apertured surface and is quarter-folded for enhanced wiping efficiency
- EcoClean® 60 is in a flat sheet format with heavier basis weight for enhanced absorbency
- Heat resistant
- Highly absorbent
- No binders or other additives
- Low ionic contamination
- Soft



100% BIODEGRADABLE

Product Name	Berkshire Part No.	Size	Sheets/Pack	Packs/Case
EcoClean® 35	ECW35.0505.30	10x10" (1/4 folded)	100	30
EcoClean® 60	ECW60.0909.20	9x9" (23x23cm)	300	20
EcoClean® 60	ECW60.1212.20	12x12" (30x30cm)	150	20

## Pro-Wipe® 750

Pro-Wipe® 750 is solvent resistant with superior absorbency. It makes an excellent upgrade for industrial wiper users.



- Thermally bonded 60% polypropylene/40% cellulose
- Highly sorbent and durable
- No secondary binders
- Cellulose core provides excellent wicking of solvents

Product Name	Berkshire Part No.	Size	Sheets/Pack	Packs/Case
ProWipe® 750	PW750.0909.20	9x9" (23x23cm)	150	20
ProWipe® 750	PW750.1212.20	12x12" (30x30cm)	75	20

# Controlled Process Nonwoven Wipers

ISO Class 5-8  
Cleanroom Class 100-100,000  
EU Grade A-D

## Pro-Wipe® 880

Pro-Wipe® 880 is ideal for cleaning areas in which acids and solvents are a concern. The multi-layer construction produces a soft material that won't scratch or abrade even the most sensitive parts in laboratories, aerospace, defense electronic, food processing, photo processing, semiconductor, circuit board, pharmaceutical and biomedical device manufacturing.



- Ultrasonically bonded multi-layer 100% polypropylene
- Certified for contact with food per EC Regulation 1935 (2004)
- Great for absorbing oil & producing soft gel capsules
- Engineered specifically for use with acids
- Highly sorbent and durable
- No added surface surfactants

FOOD CONTACT

Product Name	Berkshire Part No.	Size	Sheets/Pack	Packs/Case
Pro-Wipe® 880	PW880.0810.12	8x10" (20x25cm)	100	12
Pro-Wipe® 880	PW880.1212.12	12x12" (30x30cm)	100	12

## MicroFirst®

MicroFirst® is the first nonwoven wiper engineered and manufactured specifically for cleanroom applications. It is the ideal choice for cleaning in laboratories, aerospace, electronics, food processing, photo processing and semiconductor, circuit board, pharmaceutical and biomedical device manufacturing.



- Apertured 45% cellulose/55% polyester non-woven
- Unique construction design and surface
- High absorbency
- Durable with high wet strength
- Works well with IPA and other solvents

Product Name	Berkshire Part No.	Size	Sheets/Pack	Packs/Case
MicroFirst®	MF.0909.20	9x9" (23x23cm)	300	20
MicroFirst®	MF.1212.20	12x12" (30x30cm)	150	20

# Controlled Process Nonwoven Wipers

ISO Class 5-8  
Cleanroom Class 100-100,000  
EU Grade A-D

## MicroFirst LP®

MicroFirst LP® contains DuPont Lyocell, which is exceptionally soft and absorbent, making it ideal for wiping delicate surfaces and packaging sensitive components. This patented process eliminates binders and additives, which makes it a cleanroom wiper to rival all others in cleanliness and purity.



- 58% polyester/42% lyocell nonwoven
- Extremely pure, cleanest nonwoven in product line
- Low fiber and particle generation
- High absorbency
- Durable with high wet strength
- Works well with IPA and other solvents

Product Name	Berkshire Part No.	Size	Sheets/Pack	Packs/Case
MicroFirst LP®	MFLP.0909.12	9x9" (23x23cm)	150	12
MicroFirst LP®	MFLP.1212.18	12x12" (30x30cm)	100	18

## ProjX® 700

ProjX® 700 is a lightweight wiper ideal for early stages of cleanroom construction to clean walls and other surfaces.



- Lightweight, creped hydro-entangled 55% cellulose/45% polyester
- Creped material creates additional sorbency characteristics
- Critical combination of the strength of synthetic polyester with the absorbency of cellulose
- Economical without sacrificing purity and strength
- Works well with IPA and other solvents

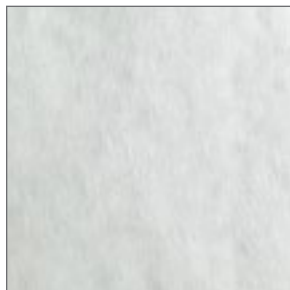
Product Name	Berkshire Part No.	Size	Sheets/Pack	Packs/Case
ProjX® 700	PJ700.0909.20	9x9" (23x23cm)	200	20
ProjX® 700	PJ700.1212.20	12x12" (30x30cm)	150	20

# Controlled Process, Lightweight, Low Linting, and Low Caliper Wipers

ISO Class 6-8  
Cleanroom Class 10,000-100,000  
EU Grade B-D

## Labx® 123

Labx® 123 is 100% biodegradable and is made from 100% manila hemp.



- Lightweight wafer separator, lens separator material
- Engineered to be lightweight and low linting
- Tray liner and wet bench material
- Cleaning of sensitive lens and or laboratory materials
- Meets government specification AA-50177, Type 1, Class 5 Lightweight, Wet Strength

Product Name	Berkshire Part No.	Size	Sheets/Pack	Packs/Case
Labx® 123	LB123.0707.63	7x7" (18x18cm)	1,000	63
Labx® 123	LB123.0909.60	9x9" (23x23cm)	500	60
Labx® 123	LB123.1212.30	12x12" (30x30cm)	500	30
Labx® 123	LB123.1818.15	18x18" (46x46cm)	500	15

## Labx® 170

Labx® 170 is a cleaner alternative to industrial tissues and wipers. It makes an excellent wafer separator, wet bench liner, laboratory workmat, material packaging and blotter.



- 80% manila hemp (abaca), 20% wood pulp
- Engineered as lightweight, low-lint wafer separator material
- Highly absorbent
- Meets government specification AA-50177, Type 1, Class 4 Heavy Weight, Wet Strength

Product Name	Berkshire Part No.	Size	Sheets/Pack	Packs/Case
Labx® 170	LB170.0707.81	7x7" (18x18cm)	500	81
Labx® 170	LB170.0909.40	9x9" (23x23cm)	500	40
Labx® 170	LB170.1212.20	12x12" (30x30cm)	500	20
Labx® 170	LB170.1818.10	18x18" (46x46cm)	500	10

## Controlled Process, Lightweight, Low Linting, and Low Caliper Wipers

ISO Class 6-8  
Cleanroom Class 10,000-100,000  
EU Grade B-D

### Lensx® 90

Lensx® 90 is 100% biodegradable and is made from 70% rayon and 30% cellulose. Lensx® 90 is engineered for extreme softness and for use in the cleaning of delicate surfaces.



- Meets government specification AA-50177, Type 1, Class 1
- Burst Strength (PSI/10 sheets dry) 51
- Acidity (pH value) 5.6
- Ash Percent (average) 0.42
- Nonabrasive

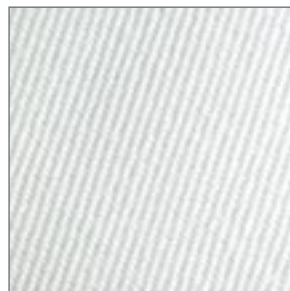
Product Name	Berkshire Part No.	Size	Sheets/Pack	Packs/Case
Lensx® 90	LN90.0406.24	4x6" (10x15cm)	1,000	24
Lensx® 90	LN90.0909.16	9x9" (23x23cm)	1,000	16
Lensx® 90	LN90.1212.4	12x12" (30x30cm)	1,000	4
Lensx® 90	LN90.2436.1	24x36" (61x91cm)	1,000	1

## Woven Cotton Wipers

ISO Class 6-8  
Cleanroom Class 10,000-100,000  
EU Grade B-D

### Twilx® 1622

Twilx® 1622 is a sturdy wiper that permits cleaning and wiping of heated surfaces as well as polishing and burnishing rigid disk surfaces. This wiper may be used in Wafer FAB, laboratories, biotech research facilities, aerospace, electronics, photo processing, printing, computer and disk drive assembly, semiconductor, biomedical, pharmaceutical and hard disk manufacturing.



- 100% woven cotton
- Engineered for thermal stability and high heat applications
- Highly sorbent and durable
- Works well with IPA and other solvents

Product Name	Berkshire Part No.	Size	Sheets/Pack	Packs/Case
Twilx® 1622	T1622.0909.8	9x9" (23x23cm)	300	8
Twilx® 1622	T1622.1212.4	12x12" (30x30cm)	150	4





## Pro-Wipe® AP

Pro-Wipe® AP is an all-purpose industrial rayon/polyester nonwoven wiper. Durable and low-linting, Pro-Wipe® AP is tough enough to be a rag replacement and clean enough to be used in a controlled manufacturing environment.



- 55% rayon / 50% polyester hydro-entangled nonwoven blend
- No binders or other chemical additives
- Silicone-free
- Smooth and soft with high strength and durability
- Lot numbers on each pack provide traceability

Product Name	Berkshire Part No.	Style	Size	Sheets/Pack	Packs/Case
Pro-Wipe® AP	PWAP12.24	Flat Pack	12x12" (30x30cm)	100	24
Pro-Wipe® AP	PWAP.1213QF.20	Quarter Folded	12x13" (30x33cm)	50	20
Pro-Wipe® AP	PWAP.PR0915.4	Perforated Roll	9x15" (23x38cm)	250	4

Pro-Wipe® AP is available in the following configurations:



Flat Pack



Quarter-Folded



Perforated Roll

Can be used with Center-Pull  
Towel Dispensers

# Industrial Process Wipers

## Pro-Wipe® SE Knit

Pro-Wipe® SE Knit is an all-purpose sealed edge knit wiper. It is cleanroom laundered for use in controlled environment and industrial applications. This is a durable wiper with exceptional cleanliness compared to competitive industrial wipers. An economical alternative to a standard clean-room knitted polyester wiper.



- 100% continuous filament knit polyester
- Ultrasonically sealed edge for reduced fiber contamination
- Laundered and packaged in ISO Class 4 (Class 10) cleanroom
- Silicone-free
- Lot numbers on each pack provide traceability

Product Name	Berkshire Part No.	Style	Size	Sheets/Pack	Packs/Case
Pro-Wipe® SE Knit	PWSEK09.14	Flat Pack	9x9" (23x23cm)	150	14

## Pro-Wipe® OS

Composed of 100% polypropylene meltblown, Pro-Wipe® OS is engineered for oil absorption and retention. Surfactant free and low linting, this wiper is also ideal for use in applications where cleanliness is vital in the manufacturing environment.



- 100% polypropylene meltblown nonwoven
- High loft and soft texture
- No binders, surfactants or other chemical additives
- Specifically designed to absorb oil and repel water
- Low linting
- Silicone-free
- Pro-Wipe® OS complies with FDA 21 CFR 177.1520 for food grade applications
- Lot numbers on each pack provide traceability

FOOD CONTACT

Product Name	Berkshire Part No.	Style	Size	Sheets/Pack	Packs/Case
Pro-Wipe® OS	PWOS12.12	Flat Pack	12x12" (30x30cm)	100	12

## SatPax® Pre-wetted Wipers



Berkshire Pre-wetted Wipers are designed for both critical and controlled processes. Pre-wetted with a range of liquids including IPA, De-ionized Water, and WFI, these wipers are in an easy, ready-to-use format. Pre-wetted wipers eliminate the Health and Safety concerns of mixing and storing hazardous liquids.

- Health & Safety – no mixing and storing of hazardous liquids
- Contamination – minimize volatile organic compounds (VOC)
- Control – no over-spraying or wetting of surfaces
- Consistency – problems associated with under-or over-wetting the wiper are eliminated.
- Economy – Greater cleaning efficiency and cleaning protocol consistency and effectiveness can be obtained.

The following are typical IPA/DIW solutions by application:

- 100% IPA- Applications that require the drying characteristics of 100% IPA or cannot tolerate water.
- 91-90% IPA - Where some DI Water improves cleaning: for example, disc drive and electrical assembly.
- 70% IPA - For optimal microbial or viable particle effectiveness. Typically used in biotech, pharmaceuticals, food, labs and USP <797> applications.
- 30% IPA - Designed for removing adhesives in critical environments.
- 10-9% IPA - Is safe to handle with the wiping efficiency of IPA and the cleaning efficiency of DI Water.
- 6% IPA - The minimum amount that will inhibit bacterial growth on wipers and excellent for cleaning environmental surfaces.

**DI Water:** Water that has had its mineral ions removed, such as cations from sodium, calcium, iron, copper and anions such as chloride and bromide.

**WFI (Water for Injection):** USP Water for Injection is prepared from water complying with the quality attributes of "Drinking Water." Purified by distillation or a purification process that is equivalent or superior to distillation in the removal of chemicals or microorganisms. WFI water is tested and certified to be at or below a certain level of endotoxins.

**IPA:** Isopropyl alcohol can be produced in several distinct grades. The two most commonly used in pre-wetted wipers are USP and Semiconductor grades. The primary difference between the two grades is the level of purification. Semiconductor grades have much more stringent requirements for metallic content and therefore are much purer in use. USP grade is typically used for sterile products while semiconductor grade is typically used in all other products.

**Quality Assurance:** Lot number on each re-sealable pouch ensures traceability



# SatPax® Pre-wetted Wipers

## SATPAX® PRE-WETTED WIPERS SELECTION GUIDE

							Solution				
		Product	Product Family	Sealed Border	Sealed Edge	Cut Edge	Sterile Version	70% IPA/ 30% DI	70% IPA/ 30% WFI	9% IPA/ 91% DI	6% IPA/ 94% DI
ISO Class 3-5 Class 1-100 EU Grade A	Cleanroom Laundered Polyester Knit	SatPax® 3000	UltraSeal® 3000	●				●		●	
		SatPax® ValuSeal® 1500			●			●			
		Sterile SatPax® MicroSeal® 1200 WFI	MicroSeal® 1200		●		●		●		
ISO Class 4-5 Class 10-100 EU Grade A		SatPax® 1200, 1200R*	Super Polx® 1200			●	●	●			
ISO Class 5-7 Class 100-1,000 EU Grade B	Nonwoven	Material Composition									
		SatPax® 670R*	Durx® 670	55% cellulose/45% polyester			●	●			
		SatPax® 1000	Durx® 670	55% cellulose/45% polyester				●		●	●
		SatPax® 550		100% polypropylene				●			

R\* - higher saturation level for solution contact time needed in the regulated industries

## Sterile Wipers

Berkshire's sterile wipers are designed for use in aseptic processing zones, sterile environments, and sterile compounding areas where microbial and particle contamination is of the greatest concern. All of Berkshire's sterile wipers are validated sterile assuring the quality of the post sterilized product. The validation process includes testing of the product and the packaging to ensure that all components meet the required specifications.

### Berkshire Sterile Wipers are:

- Validated sterile according to ANSI/AAMI/ISO guidelines
- Guaranteed to meet European standards EN 1174 and EN 552
- Sterilized by Cobalt 60 gamma irradiation to a Sterility Assurance Level of 10<sup>-6</sup>
- Certificates of Sterility available on the Berkshire.com web by lot number (<http://www.berkshire.com/sterility.shtml>)
- Lot number on each pack meets cGMP requirements for traceability
- Three-year shelf life

# SatPax® Pre-wetted Wipers

ISO Class 3-5  
Cleanroom Class 1-100  
EU Grade A-B

## SatPax® 3000

SatPax® 3000 are pre-wetted, sealed edge, 100% polyester laundered wipers in re-sealable pouches. The SatPax® is manufactured utilizing semiconductor grade IPA (isopropyl alcohol) and RO/DI H<sub>2</sub>O filtered to 0.2 µm.

- Tubular knit, continuous filament, 100% polyester
- Laundered and packaged in an ISO Class 4 (Class 10) cleanroom
- Sealed edges minimize particle contamination and abrasiveness
- Two different saturation combinations are available: 70/30, 9/91
- High tear strength for tough cleaning



Product Name	Saturation	Berkshire Part No.	Solution	Size	Sheets/Pack	Packs/Case
SatPax® 3000	33%	SPX3000.001.12	70/30 IPA/DI H <sub>2</sub> O	9x9" (23x23cm)	30	12
SatPax® 3000	28%	SPX3000.002.12	09/91 IPA/DI H <sub>2</sub> O	9x9" (23x23cm)	30	12
SatPax® 3000	28%	SPX3000.003.12	70/30 IPA/DI H <sub>2</sub> O	9x9" (23x23cm)	30	12

## SatPax® ValuSeal® 1500

SatPax® ValuSeal® 1500 are pre-wetted, sealed edge, 100% polyester laundered wipers in re-sealable pouches. The SatPax® is manufactured utilizing semiconductor grade IPA (isopropyl alcohol) and RO/DI H<sub>2</sub>O filtered to 0.2 µm.

- Double knit, 100% polyester
- Laundered and packaged in Berkshire's ISO Class 4 (Class 10) cleanroom
- Sealed edge minimizes particle contamination

Product Name	Saturation	Berkshire Part No.	Solution	Size	Sheets/Pack	Packs/Case
SatPax ValuSeal® 1500	33%	SPXV1500.001.12	70/30 IPA/DI H <sub>2</sub> O	9x9" (23x23cm)	30	12

## Sterile SatPax® MicroSeal® WFI

Sterile SatPax® MicroSeal® WFI combines MicroSeal® 1200 ultrasonically sealed edge cleanroom laundered wipers with a high saturation level of 70% IPA and 30% EWI water. These wipers are composed of a 100% continuous polyester knit fabric.



- 100% continuous filament polyester knit
- Laundered and packaged in Berkshire's ISO Class 4 cleanroom
- Pre-wetted with consistent 70% IPA/ 30% DI Water to a high saturation level

Product Name	Saturation	Berkshire Part No.	Solution	Size	Sheets/Pack	Packs/Case
<b>STERILE</b> SatPax® MicroSeal® WFI	60%	SSPMS.01.5WFI	70/30 IPA/DI H <sub>2</sub> O	12x12" (30x30cm)	50	5



## SatPax® Pre-wetted Wipers

ISO Class 4-5  
Cleanroom Class 10-100  
EU Grade A-B

### SatPax® 1200

SatPax® 1200 are pre-wetted polyester wipers available in re-sealable pouches. The SatPax® is manufactured utilizing semiconductor grade IPA (isopropyl alcohol) and R/I H<sub>2</sub>O filtered to 0.2 µm.

- 100% continuous filament, double-knit knife cut edge polyester wiper
- Laundered and packaged in Berkshire's ISO Class 4 (Class 10) cleanroom
- SatPax® 1200-R version made with a higher saturation level to support the critical solution contact time needed in the regulated industries
- Sterile SatPax® 1200 is made with a higher saturation level similar to SatPax® 1200R

Product Name	Saturation	Berkshire Part No.	Solution	Size	Sheets/Pack	Packs/Case
SatPax® 1200	33%	SPX1200.001.12	70/30 IPA/DI H <sub>2</sub> O	9x9" (23x23cm)	30	12
SatPax® 1200R	60%	SPX120R.001.12	70/30 IPA/DI H <sub>2</sub> O	9x9" (23x23cm)	30	12
<b>STERILE</b> SatPax® 1200 (High Saturation)	50%	SSP1200.003.12	70/30 IPA/DI H <sub>2</sub> O	9x9" (23x23cm)	30	12

## SatPax® Pre-wetted Wipers

ISO Class 5-8  
Cleanroom Class 100-100,000  
EU Grade A-D

### SatPax® 1000

SatPax® 1000 pre-wetted nonwoven polyester/cellulose wipers are available in re-sealable pouches and canisters. The SatPax® is manufactured utilizing semiconductor grade IPA (isopropyl alcohol) and RO/DI H<sub>2</sub>O filtered to 0.2 µm.



- 55% cellulose/45% polyester, nonwoven
- Available in re-sealable peel pouch or canister format
- Lot number on each re-sealable pouch ensures traceability
- Convenient pop-up canisters contain rolls of perforated wipers
- Three different saturation combinations are available: 70/30, 9/91 and 6/94 (canister only)
- Available sterile for aseptic processing



*Canister Option*

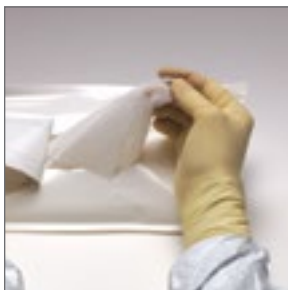
Product Name	Berkshire Part No.	Solution	Size	Sheets/Pack	Packs/Case
SatPax® 1000	SPX1000.001.12	70/30 IPA/DI H <sub>2</sub> O	9x9" (23x23cm) 70/30 IPA/DI H <sub>2</sub> O	75	12
SatPax® 1000	SPX1000.002.12	09/91 IPA/DI H <sub>2</sub> O	9x9" (23x23cm) 09/91 IPA/DI H <sub>2</sub> O	75	12
SatPax® 1000C (Canister)	SPXC1000.001.12	70/30 IPA/DI H <sub>2</sub> O	6x9" (15x23cm) 70/30 IPA/DI H <sub>2</sub> O	100	12
SatPax® 1000R (Canister Refill)	SPXC1000.01.12R	70/30 IPA/DI H <sub>2</sub> O	6x9" (15x23cm) 70/30 IPA/DI H <sub>2</sub> O (Refill)	100	12
SatPax® 1000C (Canister)	SPXC1000.002.12	09/91 IPA/DI H <sub>2</sub> O	6x9" (15x23cm) 09/91 IPA/DI H <sub>2</sub> O	100	12
SatPax® 1000R (Canister Refill)	SPXC1000.02.12R	09/91 IPA/DI H <sub>2</sub> O	6x9" (15x23cm) 09/91 IPA/DI H <sub>2</sub> O (Refill)	100	12

# SatPax® Pre-wetted Wipers

ISO Class 5-8  
Cleanroom Class 100-100,000  
EU Grade A-D

## SatPax® 670-R

SatPax® 670-R pre-wetted wipers are made with a higher saturation level to support the critical solution contact time needed in the regulated industries. The wiper is saturated with semiconductor grade isopropyl alcohol (IPA) and deionized water (DI) filtered to 0.2 µm.



- Economical 55% cellulose/45% polyester, nonwoven
- Peel and reseal pouches allow for single wiper use and prevent evaporation
- Lot number on each pouch for traceability & process accountability
- Excellent strength and durability
- Eliminate squirt bottles and uncontrolled saturation levels
- Reduce storage requirements and usage quantities

Product Name	Saturation	Berkshire Part No.	Solution	Size	Sheets/Pack	Packs/Case
SatPax® 670R	60%	SPX670R.001.12	70/30 IPA/DI H <sub>2</sub> O	9x9" (23x23cm)	75	12
<b>STERILE</b> SatPax® 670	60%	SSP670.001.24	70/30 IPA/DI H <sub>2</sub> O	9x9" (23x23cm)	30	24

## SatPax® 550

SatPax® 550 are pre-wetted meltblown polypropylene wipers that are available in re-sealable pouches. The wiper is manufactured utilizing 70% semiconductor grade IPA (isopropyl alcohol) and 30% RO/DI H<sub>2</sub>O filtered to 0.2 µm.



- Soft, 100% meltblown polypropylene
- Lot number on each re-sealable pouch ensures traceability & process accountability
- Exceptionally low levels of fibers, particles and ions

Product Name	Saturation	Berkshire Part No.	Solution	Size	Sheets/Pack	Packs/Case
SatPax® 550	75%	SPX550.001.24	70/30 IPA/DI H <sub>2</sub> O	9x11" (23x28cm)	50	24



It's **CHOICE**<sup>®</sup>. The value tiered category of wipers offering all the performance consistency of higher priced wipers.

Best of all, **CHOICE**<sup>®</sup> is from **Berkshire**, the most trusted name in contamination control products, which means quality you can count on. What's more, **CHOICE**<sup>®</sup> is backed by the **Berkshire** Guarantee - your money back if our wiper fails to perform according to specifications.

	100% POLYESTER KNIT		
	Product	Cleanroom Laundered	Edge Type
ISO Class 3-5 Class 1-100 EU Grade A-B	<b>CHOICE</b> <sup>®</sup> 700	✓	Sealed Edge
	<b>CHOICE</b> <sup>®</sup> 900	✓	Sealed Edge
ISO Class 3-5 Class 1-100 EU Grade A-B	<b>CHOICE</b> <sup>®</sup> Edge	✓	Sealed Border
ISO Class 4-5 Class 10-100 EU Grade A-B	<b>CHOICE</b> <sup>®</sup> 800	✓	Cut Edge

#### Packaging

All Berkshire wipers come in high quality, chemical resistant packaging material that has been tested for cleanroom use. All wipers are double bagged for easy transfer and wipe down.

**For Knitted Wipers, Berkshire offers wipers packaged in value and stacked configurations.**

#### Stacked product:

Each wiper is inspected and stacked one on top of the other. The end result is a square pack that allows each wiper to be removed individually from the stack.

## Applications

- Breakdown cleans in fab and suite construction
- Oxidation, Metallization or CVD Deposition areas
- Chamber cleaning and CMP processing
- Stencil and other print roll cleaning applications

### CHOICE® 700

100% continuous filament knit polyester and ultrasonically sealed edge for reduced fiber contamination. Laundered and packaged in ISO Class 4 (Class 10) cleanroom



- Most economical knit wiper in the CHOICE® category
- Critically low particles, fibers, ions and extractables
- High abrasion resistance
- Excellent absorbency
- Chemically compatible with IPA, acetone and other solvents
- Lightweight material design reduces actual cost in use compared to heavier weight products

## Applications

- Cleaning of medical device products
- Applying and removing cleaning and disinfecting solutions
- Steam autoclavable for aseptic environments

### CHOICE® 900

100% continuous filament knit polyester and ultrasonically sealed edge for reduced fiber contamination. Laundered and packaged in ISO Class 4 (Class 10) cleanroom



- Critically low particles, fibers, ions and extractables
- High abrasion resistance
- Excellent absorbency

Product Name	Berkshire Part No.	Size	Sheets/Pack	Packs/Case
CHOICE® 700	CH709.14	9x9" (23x23cm)	150	14
CHOICE® 900	CH909.10	9x9" (23x23cm)	150	10

# Critical Process Wipers

ISO Class 3-5  
Cleanroom Class 1-100  
EU Grade A-B

## Applications

- Recommended for use in ISO Class 3-5 environments
- Stencil and other print roll cleaning applications
- Cleaning of medical device products
- Applying and removing cleaning and disinfecting solutions
- Removal of tough residues in critical cleaning applications

## CHOICE® EDGE

Bordered Sealed Edge Cleanroom Laundered 100% Polyester Knit



- 100% continuous filament knit polyester
- No run interlock construction
- Laundered in an ISO Class 4 (Class 10) cleanroom
- Critically low particles, fibers, ions and extractables
- 4-side border sealed edges increase durability and minimize fiber and particle release during use
- Smooth knit construction and consistent border sealed edges provide a scratch-free wiping surface



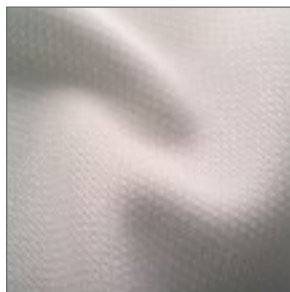
- Excellent combination of cleanliness, absorbency and abrasion resistance
- Compatible with IPA, Acetone and other solvents
- Steam autoclavable for use in aseptic environments

Product Name	Berkshire Part No.	Size	Sheets/Pack	Packs/Case
CHOICE® EDGE	CHKE09.14	9x9" (23x23cm)	100	14

ISO Class 4-5  
Cleanroom Class 10-100  
EU Grade A-B

## CHOICE® 800

100% continuous filament knit polyester, knife cut edge for reduced scratching potential. Laundered and packaged in ISO Class 4 (Class 10) cleanroom



- Very low particles, fibers, ions and extractables
- High abrasion resistance
- Excellent absorbency
- Chemically compatible with IPA, acetone and other solvents

Product Name	Berkshire Part No.	Size	Sheets/Pack	Packs/Case
CHOICE® 800	CH809.10	9x9" (23x23cm)	150	10

## Choice Documentation Products

---

### Choice® Spiral Notebooks

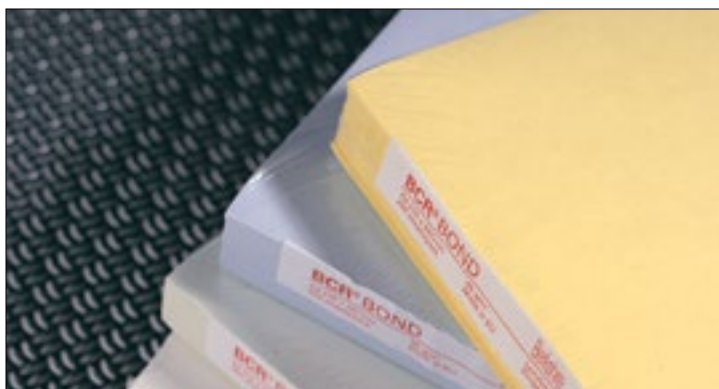
Choice® Spiral Notebooks are an economical choice for cleanroom documentation. They may be used in many industries, including laboratories, biotech research facilities, aerospace, electronics and semiconductor, circuit board, pharmaceutical and biomedical device manufacturing.



- Made with Berkshire cleanroom bond 72
- Recyclable and biodegradable
- Spiral ring with PET cover can withstand long periods in use
- Pages can be written on both sides; 100 pages/50 sheets

Product Name	Berkshire Part No.	Size	Sheets/Pack	Packs/Case
CHOICE® Spiral Notebook (College Rule)	CHNBK.0811SR.20	8 1/2 x 11" (22 x 28 cm)	1	20
CHOICE® Spiral Notebook (College Rule)	CHNBK.0508SR.40	8 1/2 x 11" (22 x 28 cm)	1	40

# Documentation Systems



## The Purest Paper

Paper and notebooks can be a major source of particles and micro-organisms in the cleanroom. BCR® Documentation Systems are made with the highest quality Berkshire Bond® paper to minimize such contamination.

Our Berkshire Bond is made with the purest quality cellulose from selected forests, forests and is specially coated to minimize particle and fiber release.

## BCR® Spiral Notebooks

BCR® Spiral Notebooks are an ideal choice for cleanroom documentation. They may be used in many industries, including laboratories, biotech research facilities, aerospace, electronics and semiconductor, circuit board, pharmaceutical and biomedical device manufacturing.



- Made with Berkshire cleanroom bond 1040
- Can be customized with your company logo
- Spiral design allows book to lie flat and stay open
- Translucent polypropylene cover makes contents easily identified
- Pages can be written on both sides; 100 pages/50 sheets
- High tear resistance to withstand long periods in use

Product Name	Berkshire Part No.	Size	Notebook/Pack	Packs/Case
BCR® Spiral Notebook (College Rule)	BSNB.0508CR.20	5 1/2 x 8 1/2" (14 x 22 cm)	1	20
BCR® Spiral Notebooks (1/4" Inch Grid)	BSNB.05081/4.20	5 1/2 x 8 1/2 (14 x 22 cm)	1	20
BCR® Spiral Notebooks (College Rule)	BSNB.0811CR.10	8 1/2 x 11" (22 x 28 cm)	1	10
BCR® Spiral Notebooks (1/4" Inch Grid)	BSNB.08111/4.10	8 1/2 x 11" (22 x 28 cm)	1	10



## Documentation Systems

### Berkshire Bond® Single Sheet Paper

Our Berkshire Bond® is made with the purest quality cellulose from selected forests, and is specially coated to minimize particle and fiber release.



- Purest cellulose to minimize contamination
- Specialized coating to reduce particles, fibers and microorganisms
- Smooth surface reduces surface particle contamination
- Retains ink from copiers and printers to reduce smudging
- Full lot tracing on every case ensuring consistent quality and control
- Double packed for cleanliness

Product Name	Berkshire Part No.	Size	Sheets/Pack	Packs/Case
<b>104 g/m² (28lb.)</b>				
BCR Bond® 1040 White	BB104.0811.10W	8 1/2 x 11" (22 x 28 cm)	250	10
BCR Bond® 1040 Blue	BB104.0811.10B	8 1/2 x 11" (22 x 28 cm)	250	10
BCR Bond® 1040 White	BB104.1117.5W	11 x 17" (28 x 43 cm)	250	5
BCR Bond® 1040 Blue	BB104.1117.5B	11 x 17" (28 x 43 cm)	250	5
<b>85 g/m² (24lb.)</b>				
BCR Bond® 850 White	BB85.0811.10W	8 1/2 x 11" (22 x 28 cm)	250	10
BCR Bond® 850 Blue	BB85.0811.10B	8 1/2 x 11" (22 x 28 cm)	250	10
BCR Bond® 850 Canary	BB85.0811.10C	8 1/2 x 11" (22 x 28 cm)	250	10
BCR Bond® 850 Pink	BB85.0811.10P	8 1/2 x 11" (22 x 28 cm)	250	10
BCR Bond® 850 Green	BB85.0811.10G	8 1/2 x 11" (22 x 28 cm)	250	10
<b>68 g/m² (18lb.)</b>				
BCR Bond® 680 White	BB68.0811.8W	8 1/2 x 11" (22 x 28 cm)	500	8
BCR Bond® 680 Blue	BB68.0811.8B	8 1/2 x 11" (22 x 28 cm)	500	8

### EcoBond® Cleanroom Bond Paper

EcoBond® is a latex-free, recyclable version of BCR® cleanroom bond paper. EcoBond® is made from the same pure sources of cellulose as our standard BCR® cleanroom bond paper and is recommended for use in the ISO Class 3-7 cleanrooms.

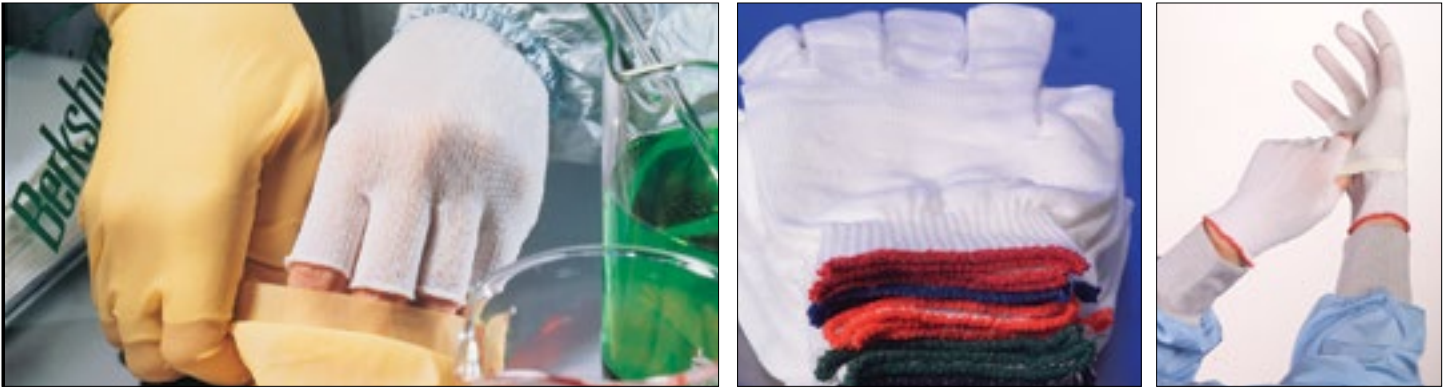


- Low in particles and fibers
- Lot traceability on each case
- Double packed for cleanliness
- Smooth surfaces reduce particle contamination
- 100% Recyclable

Product Name	Berkshire Part No.	Size	Sheets/Pack	Packs/Case
EcoBond® Recyclable Cleanroom Paper 85g White	EC085.0811.WH	8 1/2 x 11" (22 x 28 cm)	250	10

# Glove Liners

---



## Hand Health and Comfort

### BCR® Cleanroom Glove Liners - Protection and Comfort During Extended Wear

BCR® Glove Liners enhance operator comfort by reducing perspiration and contact dermatitis associated with wearing latex, vinyl, nitrile and other gloves. The gloves are ambidextrous and each glove size has a colored cuff for easy stock control.

The half-finger versions are ideal for operators who need to retain maximum dexterity and fingertip sensitivity.

BCR® Glove Liners are manufactured to the highest quality standards, offering consistent performance every time. The liners are made out of 100% continuous filament polyester or nylon. They are laundered and come in a variety of sizes and styles to maximize comfort. There are no seams on the gloves that could unravel and cause contamination.

In response to environmental and economical concerns, our glove liners can be repeatedly laundered and reused. Berkshire offers a complete line of glove liners in polyester and nylon to meet your specific need and application. Choose from a wide range of sizes that are color-coded for easy stock control.

## Glove Liners

### BCR® Polyester Glove Liners

BCR Polyester Glove Liners are made out of high quality 100% continuous filament polyester. They are medium weight and are soft and comfortable to wear for long periods.

The liners can be re-laundered and used again. Half finger liners allow operators to retain full dexterity and 100% fingertip sensitivity.



- 100% continuous filament, knitted polyester
- Composition allows moisture to be absorbed and wicked away from skin during extended wear
- Constructed using special seamless techniques
- No-run and non-ravel
- Ambidextrous for easy stock control
- Launderable for multiple reuse

Product Name	Berkshire Part No.	Size	Pairs/Pack	Packs/Case
BCR® Half-Finger Polyester Glove Liners	BGL2.20R	Regular	10	20
BCR® Half-Finger Polyester Glove Liners	BGL2.200BR	Regular Bulk	200	Case
BCR® Half-Finger Polyester Glove Liners	BGL2.20L	Large	10	20
BCR® Full-Finger Polyester Glove Liners	BGL3.20L	Large	10	20
BCR® Full-Finger Polyester Glove Liners	BGL3.20R	Regular	10	20

### BCR® Nylon Glove Liners

BCR® Single Knit Nylon Glove Liners are made out of high quality 100% continuous filament pre-shrunk nylon. They are lightweight, soft, and comfortable to wear.



- 100% knitted nylon
- Protects against skin irritation caused by latex or PVC gloves
- Constructed using special seamless techniques
- No-run and non-ravel
- Ambidextrous for easy stock control
- Launderable for multiple reuse
- Durable and comfortable

Product Name	Berkshire Part No.	Size	Pairs/Pack	Packs/Case
BCR® Half-Finger Nylon Glove Liners SK	BGL6.200LB	Large Bulk	200	Case
BCR® Half-Finger Nylon Glove Liners SK	BGL6.200SB	Small Bulk	200	Case
BCR® Full-Finger Nylon Glove Liners SK	BGL7.200LB	Large Bulk	200	Case
BCR® Full-Finger Nylon Glove Liners SK	BGL7.200MB	Medium Bulk	200	Case
BCR® Full-Finger Nylon Glove Liners SK	BGL7.200SB	Small Bulk	200	Case
BCR® Full-Finger Nylon Glove Liners SK	BGL7.200XLB	X-Large Bulk	200	Case

# Face Mask

## Face Masks

People are a significant source of contamination in any critical manufacturing process. Berkshire masks are designed to protect your cleanroom or controlled environment from human contamination. Berkshire masks provide superior filtration efficiency while offering long wearing comfort for operators.

Our range of masks ensures that you can find the right combination of performance and comfort. Berkshire also has the capability to design and produce custom configurations for any specialized application. Give us your criteria and we can tailor masks to your exact needs.



- Individually wrapped or bulk packaged
- Non-shedding, polyurethane earloops reduce particulation
- Includes polyethylene clip - mask can be worn around the ears or behind the head
- Fully enclosed nosepiece - adjustable, vinyl covered steel reduces “blow by”
- Long wear use in cleanroom and/or controlled manufacturing environments

Product Name	Berkshire Part No.	Size	Masks/Pack	Packs/Case
BCR® Mask 3 Layer	BM.1.12	Polyurethane Earloops 180mm	50	12
BCR® Mask 3 Layer	BM.1BEWO.12	Polyurethane Headbands 210mm	50	12
BCR® Mask 3 Layer	BM.1FWE.50	Knitted Nylon Earloops 180mm	50	50

## Mops & Accessories



Berkshire's cleanroom mop system is designed for both the easy removal of contamination from floors and for the distribution of disinfectants.

### BCR® Mop 1

Berkshire's cleanroom mop system is designed for both the easy removal of contamination from floors and for the distribution of disinfectants. Each mop features looped-end fan-tail construction to minimize particle generation.



- Nonwoven polyester
- Absorbent
- Economical
- Soft
- Beta - Gamma - Autoclave

Product Name	Berkshire Part No.	Mop/Case
BCR® Mop 1	BCM.1.12	12

### BCR® Mop 4



- 100% knitted polyester
- Laundered and packaged in an ISO Class 4 cleanroom
- Lot number on each pack ensures traceability
- Chemical and abrasion resistant
- Low particulates and fibers
- Durable
- Beta - Gamma - Autoclave

Product Name	Berkshire Part No.	Mop/Pack	Packs/Case
BCR® Mop 4	BCM.4.12	1	12
<b>STERILE</b> BCR® Mop 4	BCM.4S.12	1	12

## Flat Mop System

### Flat Mop Head Frame

Efficient cleaning of floors, walls and other large surfaces is critical to the overall cleanliness of the production environment. BCR® Flat Mop Systems replicate the most effective way to clean a surface - WIPING. Available with a range of wiping substrates to support your level of cleanliness.



- Clean, light and durable
- High quality anodized aluminum
- Autoclavable
- Unique stainless steel spring mechanisms for wiper attachment (Mop 2)
- Plastic eyes for wiper attachment (Mop 3 and 4)

Product Name	Berkshire Part No.	Size	Quantity
BCR® Large Mop Head Frame w/Springs	BCR.MOP2.10	3 1/2x23" (9x58cm)	10 Per Case
BCR® Large Mop Head w/Springs	BCR.MOP2.1	3 1/2x23" (9x58cm)	1 Per Case
BCR® Small Mop Head Frame w/Plastic Eyes	BCR.MOP3.10	3 1/2x11" (9x28cm)	10 Per Case
BCR® Small Mop Head Frame w/Plastic Eyes	BCR.MOP3.1	3 1/2x11" (9x2 cm)	1 Per Case
BCR® Large Mop Head Frame w/Plastic Eyes	BCR.MOP4.10	3 1/2x23" (9x58cm)	10 Per Case
BCR® Large Mop Head Frame w/Plastic Eyes	BCR.MOP4.1	3 1/2x23" (9x58cm)	1 Per Case

### Flat Mop Handle



- Telescopic handles available
- Anodized aluminum; lightweight and strong
- Autoclavable
- Telescopic handle extends from 38-72"/95-180cm

Product Name	Berkshire Part No.	Size	Quantity
Telescoping Aluminum Handle	BCR.T2HANDLE.10	37x71" (95x180cm)	10 Per Case
Telescoping Aluminum Handle	BCR.T2HANDLE.1	37x71" (95x180cm)	1 Per Case

## BCR® Flat Mop Covers/Wipers

### MicroSeal SuperSorb®

- Two-ply bonded, sealed edge 100% polyester
- Laundered and packaged in ISO Class 4 (Class 10) cleanroom
- High Abrasion Resistance
- Autoclavable/sterile versions available

Product Name	Berkshire Part No.	Size	Sheets/Pack	Packs/Case
MicroSeal SuperSorb®	MSSS.0812.12	8x12" (20x30cm)	50	12
MicroSeal SuperSorb®	MSSS.0824.12	8x24" (20x61cm)	25	12

### Durx® 670

- Hydro-entangled 55% cellulose/45% polyester
- Smooth, highly sorbent and durable
- Autoclavable/sterile versions available
- No secondary binder
- Critical combination of the strength of synthetic polyester with the absorbency of cellulose

Product Name	Berkshire Part No.	Size	Sheets/Pack	Packs/Case
Durx® 670 Flat Mop Wiper	DR670.0812.20	8x12" (20x30cm)	100	20
Durx® 670 Flat Mop Wiper	DR670.0824.10	8x24" (20x61cm)	100	10



## Isolator Cleaning System

### EasyClean® 360 Isolator Cleaning Tool

Efficient cleaning of compounding isolators, biological safety cabinets, laminar flow hoods and other mini-environments is critical to the quality and purity of compounded products. The EasyClean® 360 System includes a lightweight, maneuverable cleaning tool along with easy-to-use laundered polyester knit covers.



- Durable, mirror finish, stainless steel mop head swivels 360° for easy maneuverability
- Head can be locked for 180° swivel when desired
- 4x7" (10x18cm) triangular head shape allows improved access in tight corners
- Lightweight anodized aluminum handles provided in 2 lengths - 14" (35cm) and 24" (61cm)
- Mop head and handles can be sterilized by autoclave or gamma irradiation

Product Name	Berkshire Part No.	Size	Mop Head
EasyClean® 360 Isolator Cleaning Tool	EC360.ICT.1	14" & 24" Handle	1

### EasyClean® Elastic ICT Covers



- 100% continuous filament knitted polyester padded covers are laundered and packaged in an ISO Class 4 (Class 10) cleanroom
- Recommended for use with the EasyClean® 360 Elastic Cover
- Foam-free cushioned design ensures even surface coverage with reduced residues and contaminants
- Easy-to-install covers fit securely and stay in place during use
- Autoclavable
- Non-sterile and validated sterile versions available

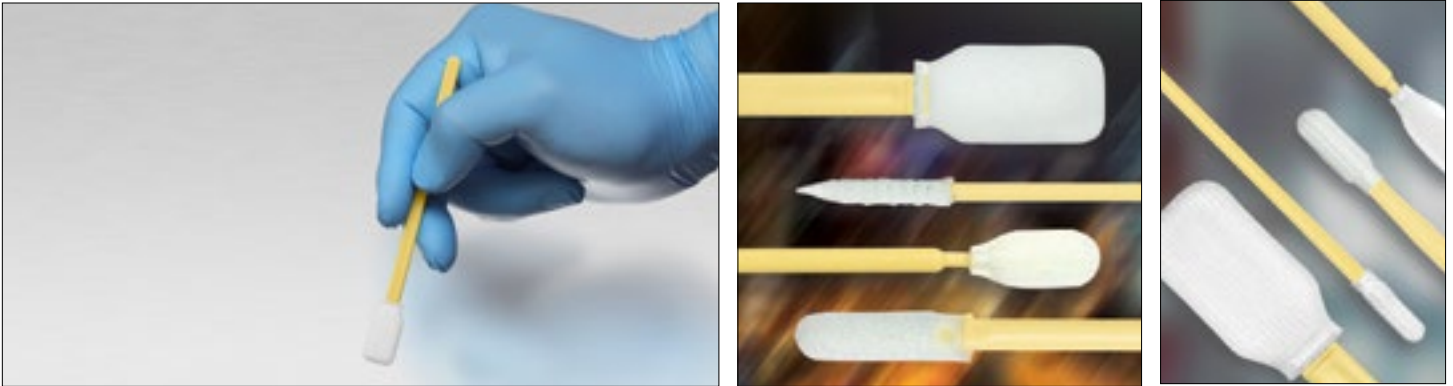
Product Name	Berkshire Part No.	Packaging	Packs/Case
EasyClean® Elastic ICT Covers	EC360.EC.6	25 Elastic Covers and 1 Padded Cover/Pack	6
Sterile EasyClean® Elastic ICT Covers	EC360.ECST.20	10 Elastic Covers and 1 Padded Cover/Pack	20

### EasyClean® 360 Nonwoven Isolator Cleaning Tool Covers

- Double-ply 55% polyester/45% cellulose
- 100% nonwoven rayon inner layer for added absorbency
- Elastic edge allows secure fit on the mop head during use
- Autoclavable
- Recommended for use in ISO Class 5-8 or EU Grade A/C environments

Product Name	Berkshire Part No.	Packaging	Packs/Case
EasyClean® 360 Nonwoven Covers	EC360.NW.40	5 Covers/Packs, 4 Packs/Package	10

# Swabs



Berkshire's Lab-Tips® swabs are exceptionally pure for precision cleaning, surface sampling, applying lubricants and other liquids, and validation procedures. Berkshire offers an extensive range of high quality knitted polyester, reticulated and non-reticulated foam, and nonwoven polyester tip materials to choose from.

## Packaging:

Lab-Tips® are double bagged in bags manufactured from high purity polyethylene resin that ensures ultra-low organic and inorganic residues. Bags are free from silicone, amides, and DP and comply with RoHS directives. An easy tear notch and solvent resistant inner pack labels ensure ease of use.

## Swab Form - Sock Tip:

Sock tips are made by sandwiching the swab handle between multiple layers of thermoplastic head material. The head material is completely sealed and bonded to the handle with heat and pressure. No contaminating adhesives are used in the manufacturing of Berkshire's sock tip swabs.

## HEAD TYPE

Berkshire Lab-Tips® swabs are available with various types of tip materials to offer the right swab for your needs.

- |                                                                                                                      |                                                                                                                                                                                                                                                                                                                                                            |
|----------------------------------------------------------------------------------------------------------------------|------------------------------------------------------------------------------------------------------------------------------------------------------------------------------------------------------------------------------------------------------------------------------------------------------------------------------------------------------------|
| <b>Knitted polyester:</b>                                                                                            | Berkshire's knitted polyester swabs are made from cleanroom laundered, continuous filament polyester for exceptional purity. They offer low ionic contamination levels along with excellent durability and absorbent capacity. Knitted polyester swabs have excellent chemical resistance and are compatible with organic solvents.                        |
| <b>Reticulated (Open Cell) foam:</b>                                                                                 | Reticulated or open cell foams are structures in which the cell windows have been removed by thermal or chemical means. This process results in a structure that has excellent liquid retention and particle entrapment capability. Berkshire's open cell foam swabs are made from clean room laundered 100ppi polyurethane foam for superior cleanliness. |
| <b>Non-reticulated (Closed Cell) foam:</b>                                                                           | Closed cell foams are completely sealed with cell windows intact. Closed cell foams generally exhibit higher density, greater durability and reduced absorption versus open cell foams. Berkshire's closed cell foam swabs are manufactured from 100 ppi polyurethane.                                                                                     |
| <b>Nonwoven Polyester:</b>                                                                                           | Swabs made from 100% polyester nonwoven material are absorbent, non-abrasive and have very low ionic contamination and NVR levels. These swabs are also compatible with most solvents.                                                                                                                                                                     |
| <b>PPI (Pores/Linear inch):</b> The number of cells per linear inch in the foam membrane. A measure of foam density. |                                                                                                                                                                                                                                                                                                                                                            |

## Lab-Tips® Knitted Polyester Swabs

Cleanroom Laundered Double Layer 100% Polyester Knit Swab Heads

Part No.	Head Width	Head Thickness	Head Length	Handle Width	Handle Thickness	Handle Length
LTP125	12.7mm (0.500")	5mm (0.196")	25mm (0.984")	5.5mm (0.216")	2.8mm (0.110")	100mm (3.94")

Polyester swabs for surface sampling, cleaning validation, and cleaning broad surface areas	<b>Total Swab Length</b>	<b>Head Bond</b>	<b>Head Type</b>	<b>Packaging</b>
	125mm (4.92")	Thermal	Rigid	100 Swabs/Pk, 5Pks/Cs



Part No.	Head Width	Head Thickness	Head Length	Handle Width	Handle Thickness	Handle Length
LTP1465	7mm (0.275")	4mm (0.157")	16.8mm (0.661")	3.1mm (0.122")	3.1mm (0.122")	145mm (5.71")

Polyester swabs with long handle for surface sampling, cleaning validation, and cleaning hard to reach places	<b>Total Swab Length</b>	<b>Head Bond</b>	<b>Head Type</b>	<b>Packaging</b>
	162mm (6.38")	Thermal	Flexible	100 Swabs/Pk, 10pks/Cs



Part No.	Head Width	Head Thickness	Head Length	Handle Width	Handle Thickness	Handle Length
LTP70F	4mm (0.157")	2.5mm (0.098")	11mm (0.433")	2.2mm (0.086")	2.2mm (0.086")	59mm (2.32")

Polyester swabs with flexible paddle head for cleaning grooved, slotted, and recessed areas	<b>Total Swab Length</b>	<b>Head Bond</b>	<b>Head Type</b>	<b>Packaging</b>
	70mm (2.75")	Thermal	Flexible	100 Swabs/Pk, 20Pks/Cs



Part No.	Head Width	Head Thickness	Head Length	Handle Width	Handle Thickness	Handle Length
LTP70R	4mm (0.157")	4mm (0.157")	12.5mm (0.492")	2.8mm (0.110")	2.8mm (0.110")	58mm (2.28")

Polyester swab with short handle and rigid core for general purpose cleaning and controlled application	<b>Total Swab Length</b>	<b>Head Bond</b>	<b>Head Type</b>	<b>Packaging</b>
	70mm (2.75")	Thermal	Rigid	100 Swabs/Pk, 20Pks/Cs



## Lab-Tips® Cleanroom Laundered Foam Swabs

Cleanroom Laundered 100 ppi Open-Cell Polyurethane Foam Swab Heads

Part No.	Head Width	Head Thickness	Head Length	Handle Width	Handle Thickness	Handle Length
LTO1465	7mm (0.276")	3mm (0.118")	16.8mm (0.661")	3.1mm (0.122")	3.1mm (0.122")	145mm (5.71")

Foam sock head swab with long handle for cleaning hard to reach areas	<b>Total Swab Length</b>	<b>Head Bond</b>	<b>Head Type</b>	<b>Packaging</b>
	162mm (6.38")	Thermal	Flexible	100 Swabs/Pk, 10Pks/Cs



Part No.	Head Width	Head Thickness	Head Length	Handle Width	Handle Thickness	Handle Length
LTO70P	4mm (0.157")	4mm (0.157")	20mm (0.787")	2.5mm (0.098")	2.5mm (0.098")	50mm (1.97")

Foam sock swab with precision pointed head for cleaning small slotted and grooved areas	<b>Total Swab Length</b>	<b>Head Bond</b>	<b>Head Type</b>	<b>Packaging</b>
	70mm (2.75")	Thermal	Pointed	100 Swabs/Pk, 20Pks/Cs



Part No.	Head Width	Head Thickness	Head Length	Handle Width	Handle Thickness	Handle Length
LTO70F	4mm (0.157")	2mm (0.078")	11mm (0.433")	2.2mm (0.086")	2.2mm (0.086")	59mm (2.32")

Foam swab with short handle for general purpose cleaning	<b>Total Swab Length</b>	<b>Head Bond</b>	<b>Head Type</b>	<b>Packaging</b>
	70mm (2.75")	Thermal	Flexible	100 Swabs/Pk, 20Pks/Cs



Part No.	Head Width	Head Thickness	Head Length	Handle Width	Handle Thickness	Handle Length
LTO70R	4mm (0.157")	4mm (0.157")	12.5mm (0.492")	2.8mm (0.110")	2.8mm (0.110")	58mm (2.28")

Foam swab with short handle and rigid core for general purpose cleaning and controlled application	<b>Total Swab Length</b>	<b>Head Bond</b>	<b>Head Type</b>	<b>Packaging</b>
	70mm (2.75")	Thermal	Rigid	100 Swabs/Pk, 20Pks/Cs



## Lab-Tips® Closed Cell Foam Swabs

100 ppi Closed Cell Polyurethane Foam Swab Heads

Part No.	Head Width	Head Thickness	Head Length	Handle Width	Handle Thickness	Handle Length
LTC125	13mm (0.511")	8mm (0.315")	25mm (0.984")	5.5mm (0.216")	2.8mm (0.110")	100mm (3.94")

Foam swab with large rectangular rigid paddle for general purpose cleaning	<b>Total Swab Length</b>	<b>Head Bond</b>	<b>Head Type</b>	<b>Packaging</b>
	125mm (4.92")	Thermal	Rigid	100 Swabs/Pk, 5Pk/Cs



## Lab-Tips® Nonwoven 100% Polyester Swabs

Hydro-entangled 100% Polyester Swab Heads

Part No.	Head Width	Head Thickness	Head Length	Handle Width	Handle Thickness	Handle Length
LTN1465	7mm (0.275")	4mm (0.118")	17mm (0.670")	3.1mm (0.157")	3.1mm (0.157")	145mm (5.71")

Nonwoven polyester swab with long handle and flexible tip for surface sampling and cleaning hard to reach areas	<b>Total Swab Length</b>	<b>Head Bond</b>	<b>Head Type</b>	<b>Packaging</b>
	162mm (6.38")	Thermal	Flexible	100 Swabs/Pk, 10Pk/Cs



Part No.	Head Width	Head Thickness	Head Length	Handle Width	Handle Thickness	Handle Length
LTN70F	4mm (0.157")	2mm (0.078")	11mm (0.433")	2.2mm (0.086")	2.2mm (0.086")	59mm (2.32")

Nonwoven polyester swab with small flexible tip for cleaning very small grooved or slotted areas	<b>Total Swab Length</b>	<b>Head Bond</b>	<b>Head Type</b>	<b>Packaging</b>
	70mm (2.75")	Thermal	Flexible	100 Swabs/Pk, 20Pk/Cs





# Berkshire

ENGINEERED CLEAN

**BERKSHIRE IS THE GLOBAL LEADER** in the engineering and manufacturing of contamination control products for cleanrooms and critical environments worldwide. Global technical specialists assess specific process needs and bring qualified solutions to the most critical applications. We bring the products, the knowledge and the integrity critical to your success.

America  
Tel 1.413.528.2602  
Fax 1.336.446.0156  
Email [csr@berkshire.com](mailto:csr@berkshire.com)

Europe  
Tel 44.(0)870.757.2877  
Fax 44.(0)870.757.2878  
Email [enquiries@berkshire.uk.com](mailto:enquiries@berkshire.uk.com)

SE Asia  
Tel 65.6252.4313  
Fax 65.6252.4312  
Email enquiries@berkshire.com.sg

Japan  
Tel 81.3.5827.2380  
Fax 81.3.5827.2382  
Email [master@berkshire.co.jp](mailto:master@berkshire.co.jp)